

# Introduction

Page 1 of 8  
Feb 2006

<http://euro-emc.com>  
e-mail: [info@euro-emc.com](mailto:info@euro-emc.com)



This introduction mentions our whole range of production and should give a quick overview. For more details please refer to our lists **Lieferprogramm** or **products**, or to the specific datasheets. We are also pleased if you contact us.

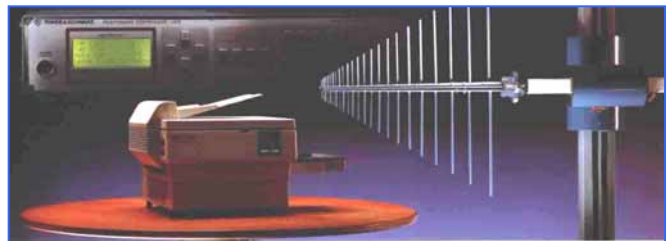
## General



One of our first fairs - 1997 in Düsseldorf/Germany

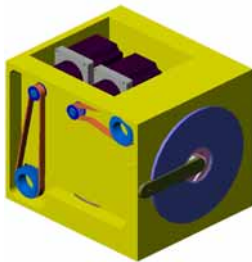
High Quality Positioning Systems since 1991. Originally designed for Rohde & Schwarz requirements and distributed under their label. Today instruments for a wide range of applications as EMC testing, common RF use like field strength testing and for general positioning.

All our electrical instruments are not only designed to meet EMC specifications but to produce as less RFI noise as possible - therefore remote control is always by fibre-optic cables.



Antenna Positioning Mast, Turntable and Absorbing Clamp Slideway – a system for EMC measurements

Models HCA, HCC, HCM, HCT



Not our favoured activity but very interesting and informative: Positioning of astronomical devices with accuracies up to 0.002 dg

## Controller



Positioning Controller RSC 02 / RSC 04



RSC-Z1 handset for RSC 02 and RSC 04, not available at present, new design in the future



Positioning Controller RSC 100  
Remote-control by RS 232, AC or DC supply

## Antenna Masts

For antenna masts we largely use dielectrically materials to get as less interference with the electromagnetic field as possible. In addition, by using glassfiber-reinforced polvester, we get extremely sturdv and weatherproof structures.

Control:  Fully remote  remote/manual  manual



### RSM 010

Remote-control operated adjustment of antenna height and antenna polarization (0/45/90 dg), standard height 4 and 6 m, designed also for OATS's, controlled by RSC 02



With RSM 010-Z6, mobile mast base

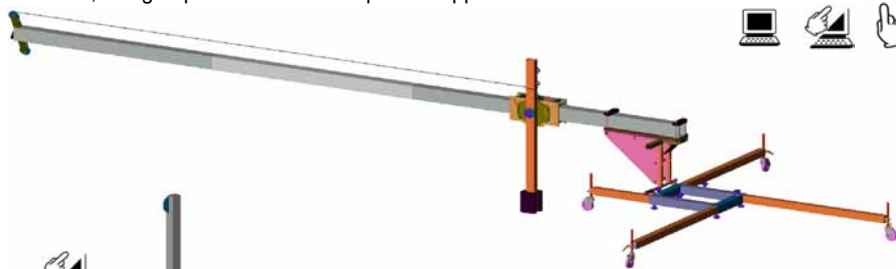


Don't worry about hurricans; mast tilted due to a hinge, if not in use

RSM 010 is applied for testing of field uniformity by:

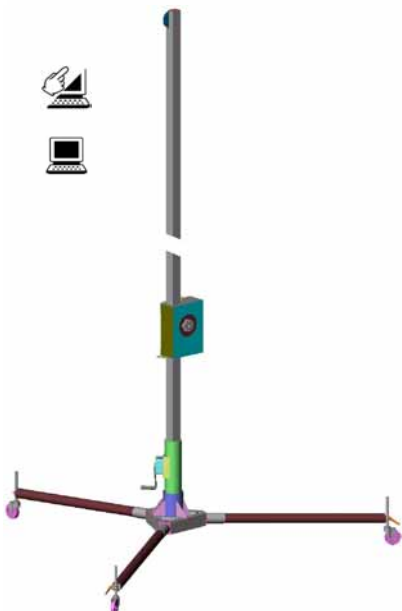


**RSM 080** - a range of antenna masts for mobile or stationary use, indoor and outdoor use, no standard, design optimised for the respective application



Example of design:

Height 100 ... 600 cm, fully manual operation, load capacity 20 kg, manual antenna tilt  $\pm 30$  dg, easy set up due to a hinge, designed for the french army



### RSM 082

transportable, easy collapsible, load capacity ~6 kg, 12/24 VDC

### RSM 083

antenna mast with manual adjustment of antenna height and polarization, antenna height up to 6 m, load capacity up to 12 kg

*new!*



# Introduction

Page 3 of 8  
Feb 2006

<http://euro-emc.com>  
e-mail: [info@euro-emc.com](mailto:info@euro-emc.com)



## MP 085

polarization device, designed to mount on top of a tripod, particularly suitable for MS 085, load capacity 12 kg



*new!*

## MS 085

columnar tripod, the columnar shape enables the turn of even bulky antennas into vertical polarization state, height 90 ... 165 cm



*new!*

## RSM 084

transportable, easy collapsible, load capacity ~6 kg



*new!*

## RSM 090

remote-control operated adjustment of antenna polarization (0/90 dg), manual setting of antenna height in steps of 1 cm, designed also for heavy antennas

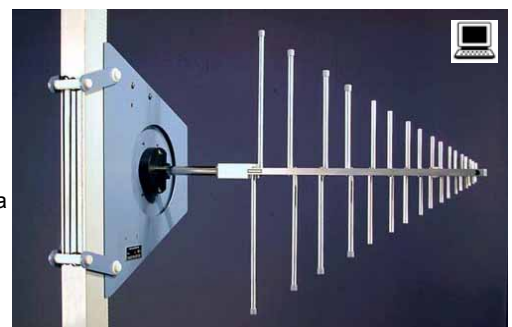
Controlled by RSC 04, RSC 100 or RSM 090-Z4



RSM 090-Z4, fibre-optic interface for RS 232

## RSM 091

very accurately remote-control operated adjustment of antenna polarization (0 ... 360 ±0.3 dg), controlled by RSC 100





# Introduction

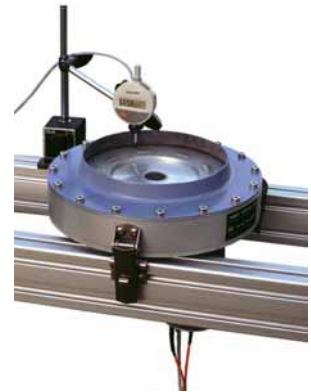
Page 4 of 8  
Feb 2006

<http://euro-emc.com>  
e-mail: [info@euro-emc.com](mailto:info@euro-emc.com)



### RSM 110

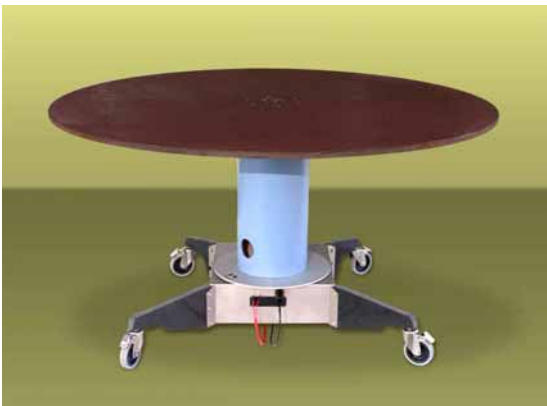
mobile revolving antenna mast, very accurately remote-control operated positioning in azimuth 0 ... 360 dg  $\pm 0.3$  dg, 12/24 VDC, controlled by RSC 100



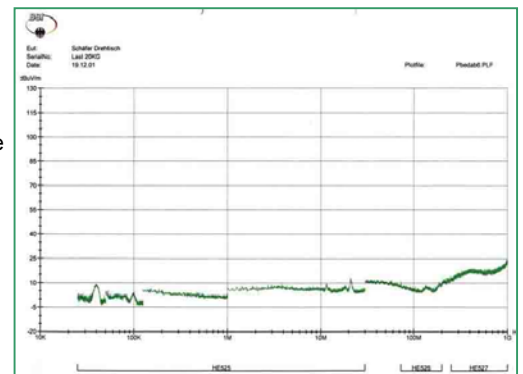
Automatically factory test of azimuth drive

## Turntable non-metallic

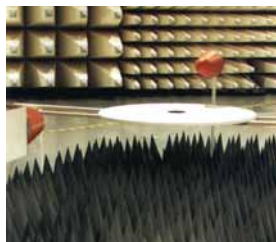
All our turntables (non-metallic and metallic) have to be controlled by RSC 02 or RSC 04



RST 020 was tested and purchased by the german authority **BSI** for a very sensitive application

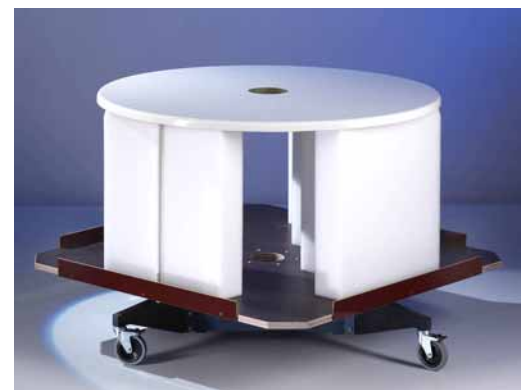


RST 020, height 80cm, load capacity 300kg,  $\varnothing$  1.0 ... 1.5 m, indoor and outdoor use, shown with option Z4



Testing of tabletop for the RST 028

RST 028, a modified RST 020, developed in co-operation with the german authority Bundesnetzagentur (Reg TP) for minimal interference with the EUT



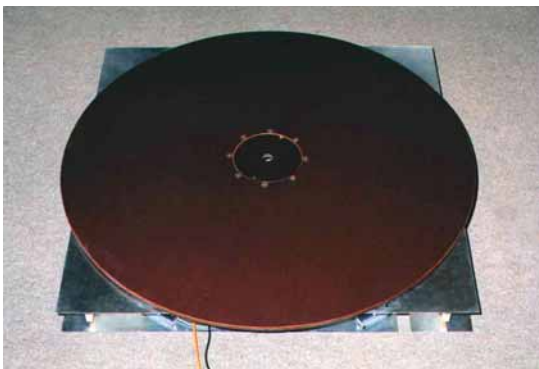
# Introduction

Page 5 of 8  
Feb 2006

<http://euro-emc.com>  
e-mail: [info@euro-emc.com](mailto:info@euro-emc.com)



RST 071, free-standing design,  $\varnothing$  1.0  
... 1.5 m, load capacity 400 kg, height  
160 mm



RST 070, this flat square module is mainly designed for  
installation into the false floor of a Fully-Anechoic Chamber,  $\varnothing$   
1.0 ... 1.5 m, load capacity up to 1000 kg, min. height 130 mm



RST 070, work in progress for an uncommon  
installation into an OATS, only table-top above  
Groundplane, special  $\varnothing$  of 1.85 metre



without tabletop

RST 070 - standard installation  
in a Fully-Anechoic Chamber,  
emergency stops can be supplied  
with all turntables according to  
legal directions (option)



ready for operation

## Turntable metallic



RST 040, for installation into the false floor of a Semi-Anechoic  
Chamber,  $\varnothing$  1.0 ... 1.5 m, load capacity 400 kg, overall height c. 180  
mm, also for OATS's



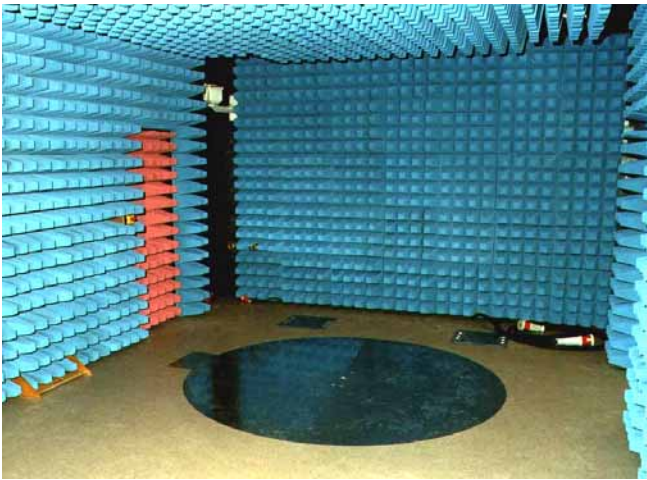
The favoured way for all our metallic turntable to  
contact the table-top to the surrounding  
Groundplane: Contact Brushes made by a copper  
alloying with a fixture of non-corroding steel; low  
resistance, very low abrasion, very slight



# Introduction

Page 6 of 8  
Feb 2006

<http://euro-emc.com>  
e-mail: [info@euro-emc.com](mailto:info@euro-emc.com)

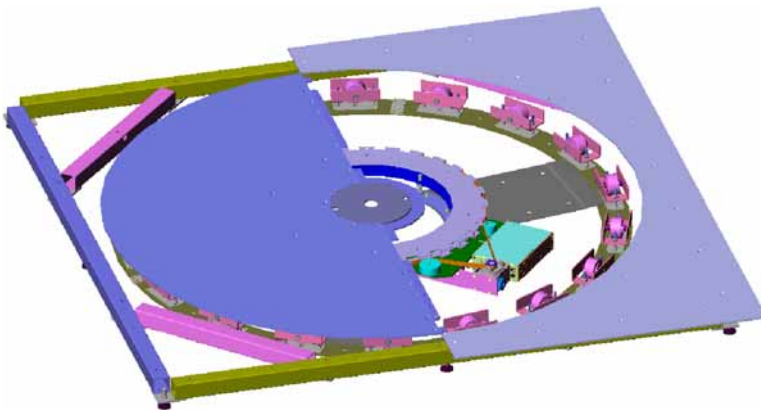


RST 072, integrated into an Albatross Semi-Anechoic Chamber

RST 072 are mainly manufactured in the range of  $\varnothing$  1.0 ... 1.5 m; designed for installation into the false floor of a Semi-Anechoic Chamber or into an OATS, load capacity 500 to 1000 kg, overall height only 130 mm



Installation of a RST 072  $\varnothing$  1.2 m in an OATS next to Frankfurt



RST 073 - this modular design forms a range of turntable mainly manufactured with diametres 2.0 ... 2.5 m; load capacity up to 3000 kg, indoor and outdoor application

RST 074, specific design and load capacity,  $\varnothing$  from 3.0 m; this photograph shows the drive-unit for a  $\varnothing$  5.0 m turntable



With big turntables, don't neglect the legal directions, you'll risk your neck - in every meaning! We will assist you!

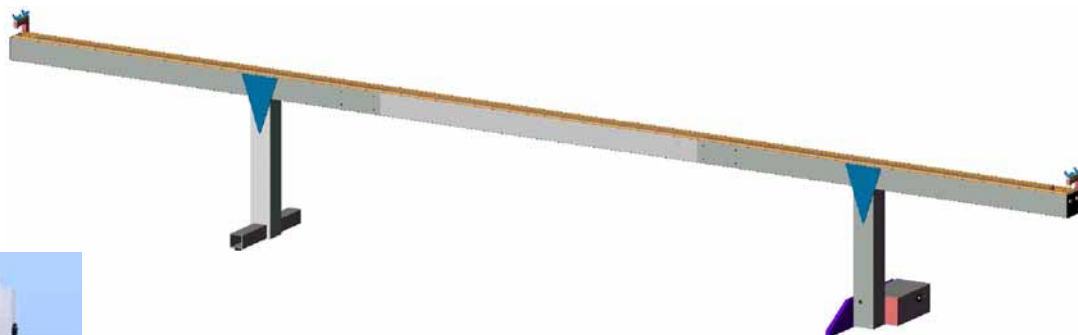


Designed for Adam Opel AG: Mobile turntable  $\varnothing$  5.5 m including tilt-trailer, for the measurement of characteristics of car-antennas



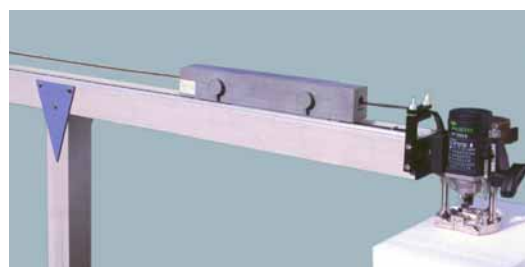
Flat turntable  $\varnothing$  3.0 m, height 160 mm, load capacity 2000 kg, on our minimized booth on fair in 2003

## Diverse Positioning Units



### RSA

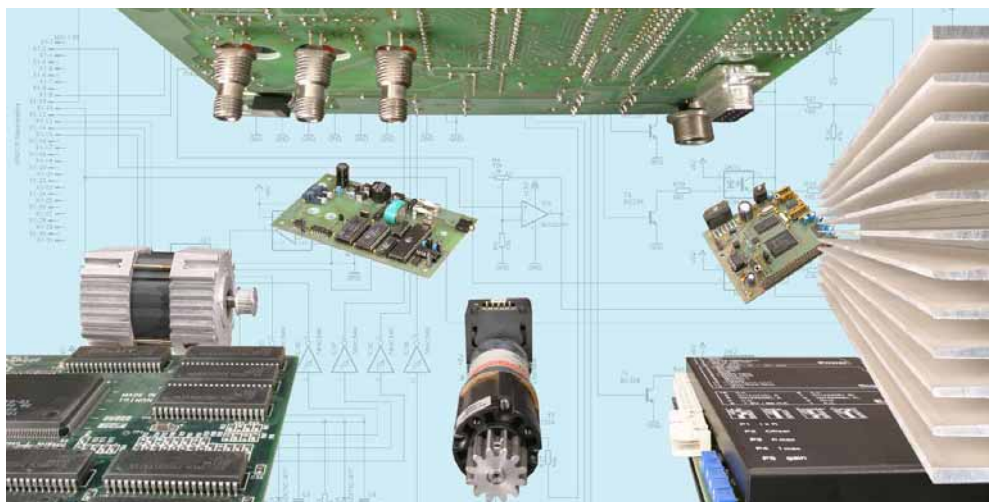
Absorbing Clamp Slideway with 500 cm travel range, standard height 80 cm, absorbing clamp not provided



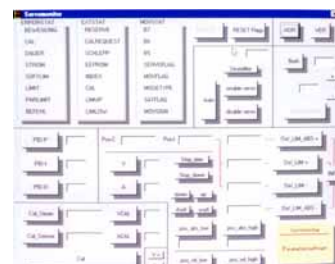
### RSP 100

Example of our all-purpose positioning device for EUT's, 2 axes of rotation, accuracy up to 0.2 dg, load capacity up to 20 kg

## Services & Consultation



We design your hardware and link it to your PC



Applications e.g. for

- control
- testing
- electric drives



Consultation and design of motion systems in relation to safety requirements

## Accessories



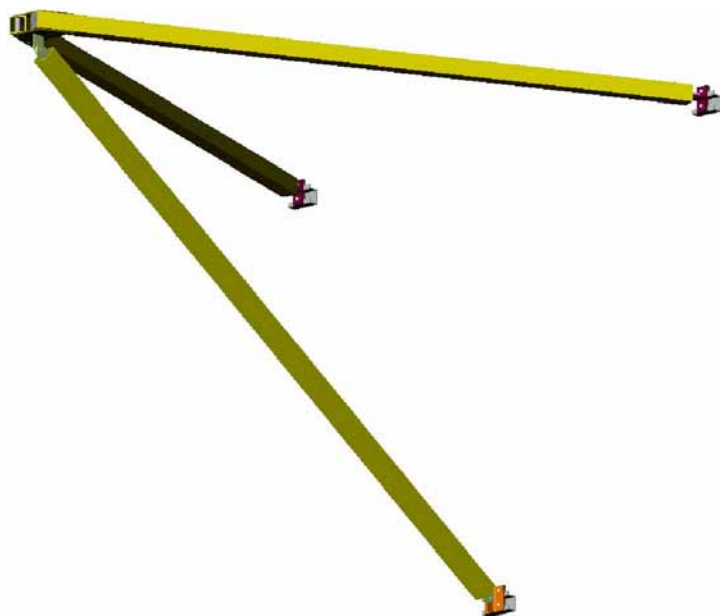
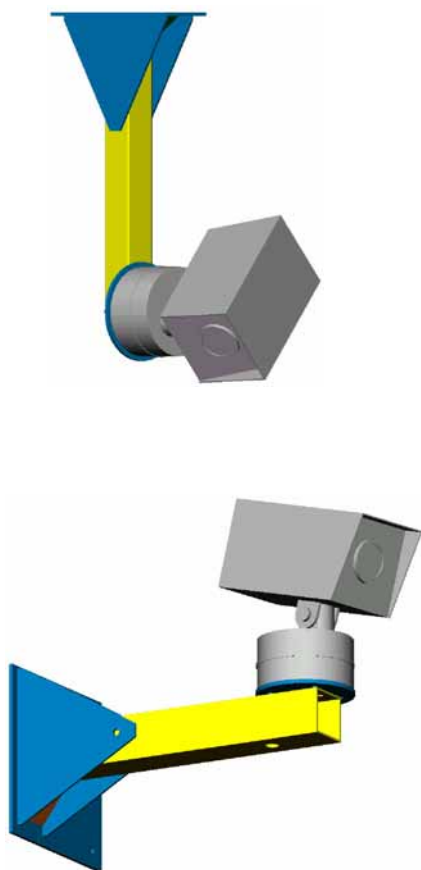
RST 029, table to place on an integrated turntable, developed in co-operation with the german authority Reg TP for minimal interference with the EUT



A range of fibre-optic cables, 1-way and 2-way, length up to 80 m

Repeater for fibre-optic signals if 80 metre length are not enough; 1 ... 4-way

## Brackets



Brackets for wall- or ceiling mounting of video-cameras and similar equipment, made of glasfibre, load capacity as required